

SOPTALC®

PRODUCT INFORMATION

EC: 238-877-9, CAS: 14807-96-6.

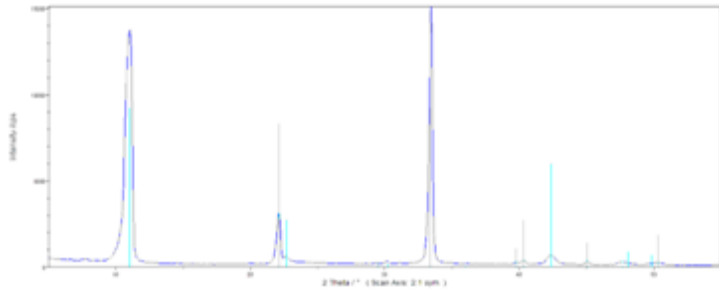
Talc 100 % (method XRD).

Product contains no detectable amounts of asbestos type minerals (ISO 22262-1:2012) and quartz (method XRD).

Tests were carried out in Institute for Engineering of Polymer Materials and Dyes, Paint and Plactic Department in Gliwice, Poland. www.impib.pl

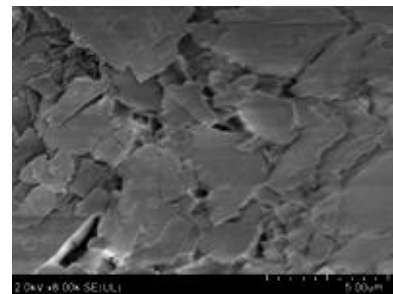
CHEMICAL ANALYSIS

MgO	31,50 %
SiO ₂	62,30 %
Al ₂ O ₃	0,12 %
CaO	0,25 %
Fe ₂ O ₃	0,22 %
Mn ₃ O ₄	<0,01 %
Na ₂ O	0,03 %



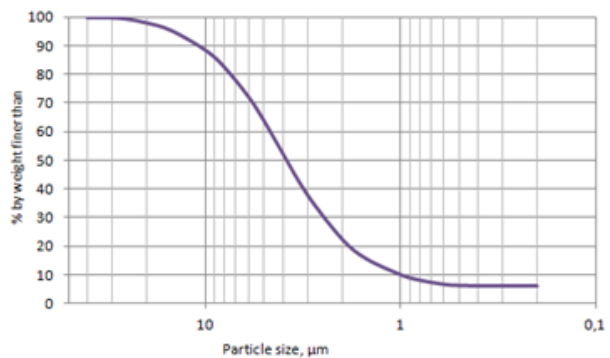
PHYSICAL AND CHEMICAL PROPERTIES ISO 3262-10

Matter soluble in water, % m/m	0,16
Loss on ignition, % m/m	4,54
pH value of aqueous suspension	9,51
Oil absorption, g/100g	42,5
Resistivity of aqueous extract, Ωm	189,7



GRANULOMETRY

Median particle size D ₅₀ , μm	3,0
Modal diameter D _m , μm	3,3
D ₉₈ , μm	20,0



OPTICAL PROPERTIES

Colour ISO 7724

Whiteness (WI) and yellowness index (YI) ASTM E313

L*	98,60	WI	78,32
a*	0,10	YI	4,63
b*	3,05		